

## GENERAL

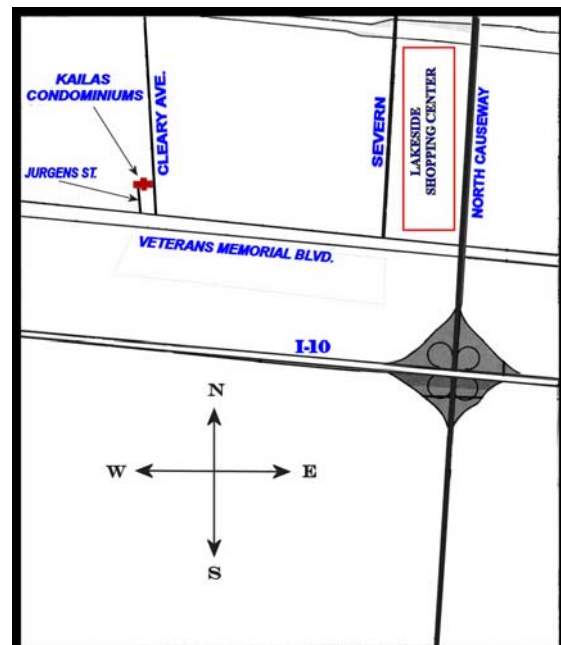
- Private balconies
- Double insulated vinyl windows with lo-E coating
- Carrier Air Conditioning, 12 SEER rating
- Granite counter tops in kitchens and baths
- Granite floors in baths
- Stainless steel under mount kitchen sink
- Under mount porcelain vanity bowl
- Large whirlpool corner tubs (applies to certain units)
- Brushed nickel plumbing fixtures.
- Ceramic floor tiles in kitchen
- GE kitchen appliances
- Wired for digital cable, phone and high speed internet
- Carpet in bedrooms/living/dining room

## PEACE OF MIND

- Fire sprinkler in every room
- Audible fire alert system
- Each home separated by 1 hour fire rated walls and 6" concrete floors
- Interior and exterior metal frame construction
- Building exterior constructed of 1" concrete stucco over brick
- Card access steel entry gates
- Abundant parking lot lighting
- Building entry intercom with individual electronic door release

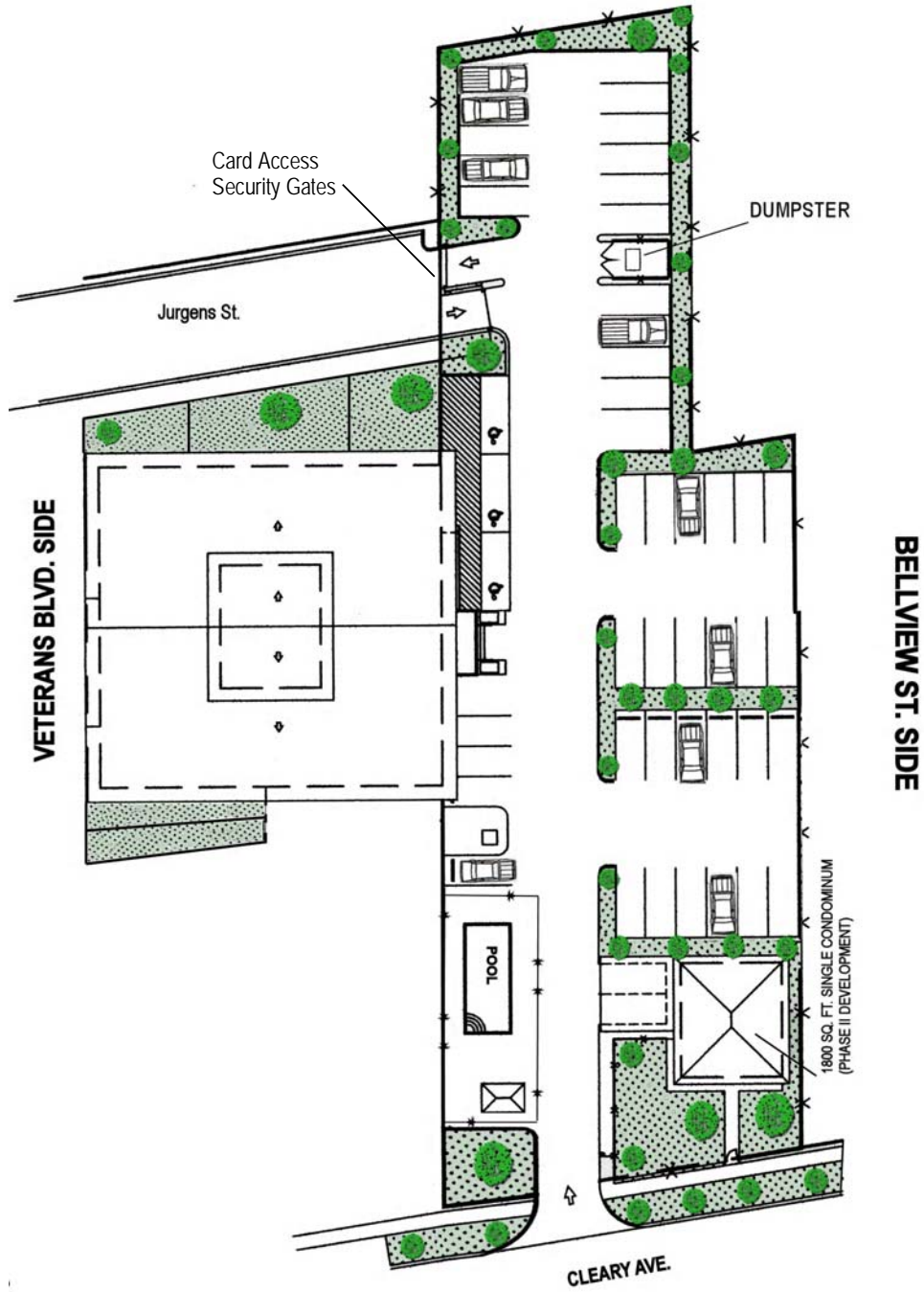
## COMMON AREA

- Five story open air atrium
- Granite tile floors
- Cascading water fall
- Patio table and chairs for your leisure
- Large 3000 LB capacity elevator



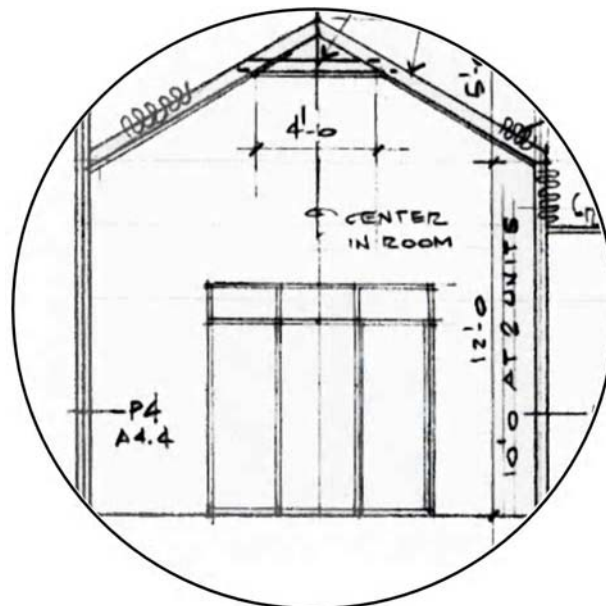
*Kailas Condominiums are located in the heart of Metairie, five minutes from Lakeside Shopping Center, Interstate 10 and a host of fine dining restaurants.*

Site plan



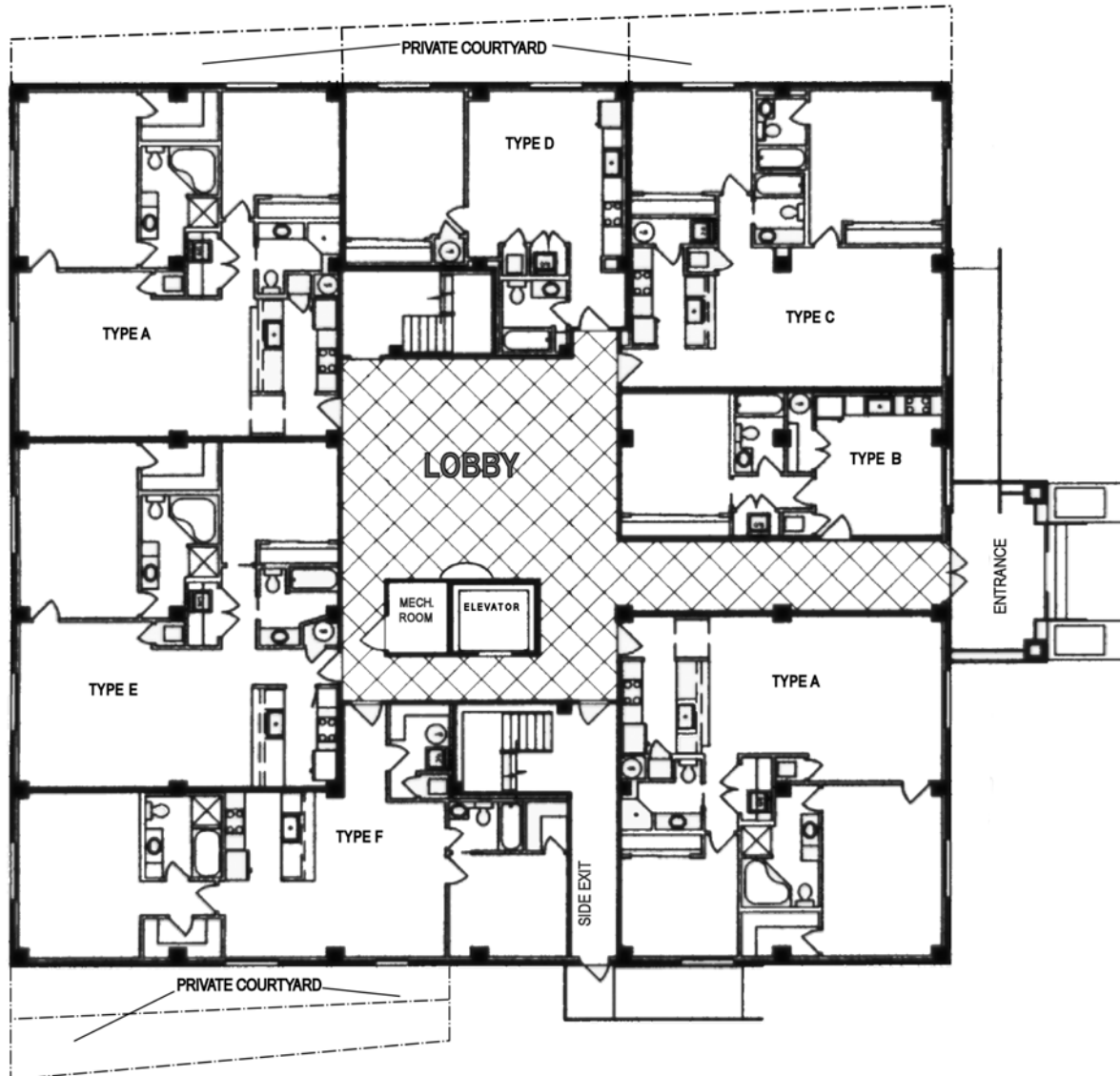
## Fifth floor

- Ten foot ceiling height :Bedrooms, kitchens, baths and laundry rooms
- Fourteen foot vaulted ceilings in living/dining rooms.
- Two layered crown molding in main living area and master bedroom
- Private balconies
- Double insulated vinyl windows with lo-E coating
- Carrier Air Conditioning, 12 SEER rating
- Granite counter tops in kitchens and baths
- Granite floor tiles in baths
- Stainless steel under mount kitchen sink
- Under mount porcelain vanity bowl
- Large whirlpool corner tubs (applies to certain units)
- Brushed nickel plumbing fixtures.
- Ceramic floor tiles in kitchen
- GE Kitchen appliances
- Wired for digital cable, phone and high speed internet
- Carpet in bedrooms/living/dining room



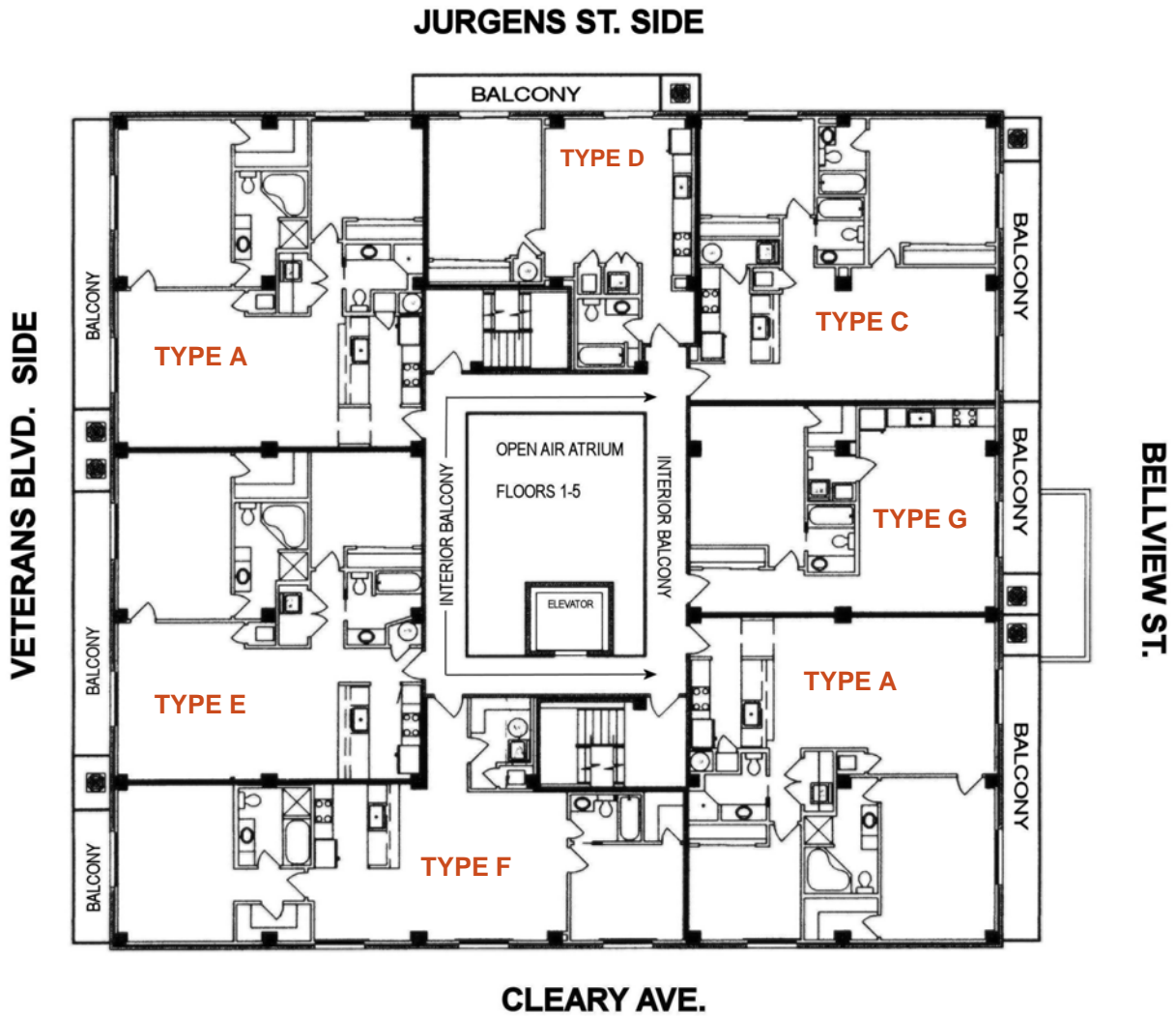
**Fourteen foot Vaulted Ceilings in Living/ Dining rooms.**

**First- floor**



UNIT	SQ. FT.
A	1,222
B	518
C	1,033
D	650
E	1,206
F	1,045

**Second-Fifth floor**

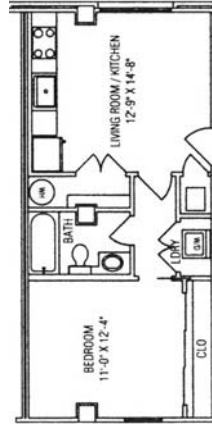


UNIT	SQ. FT.	BALCONY SQ. FT.	TOTAL SQ. FT.
A	1,222	140	1,362
C	1,033	120	1,033
D	650	120	770
E	1,206	130	1,336
F	1,115	80	1,195
G	770	100	870

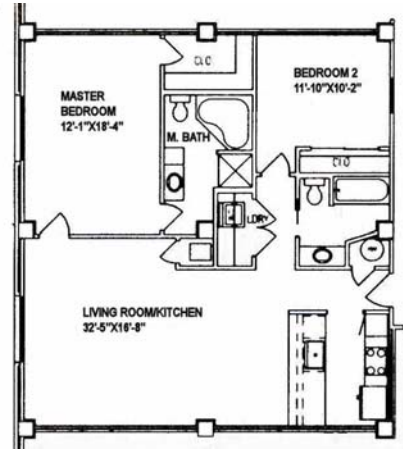
**First floor**



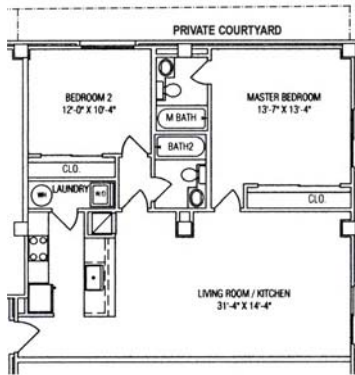
**UNIT A** 1,222 sq. ft.



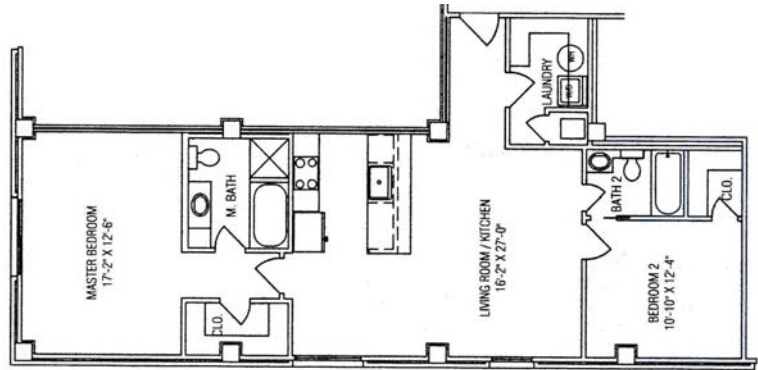
**UNIT B** 518 sq. ft.



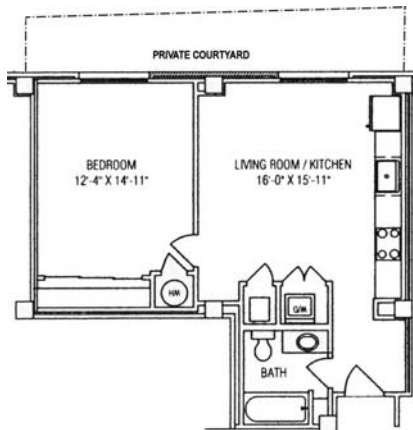
**UNIT E** 1,206 sq. ft.



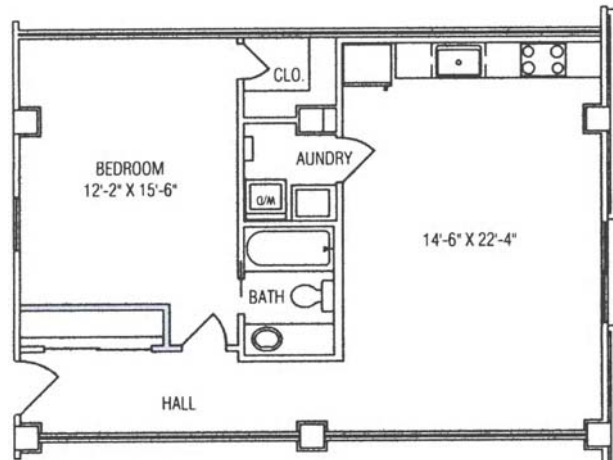
**UNIT C** 1,033 sq. ft.



**UNIT F** 1,045 sq. ft.

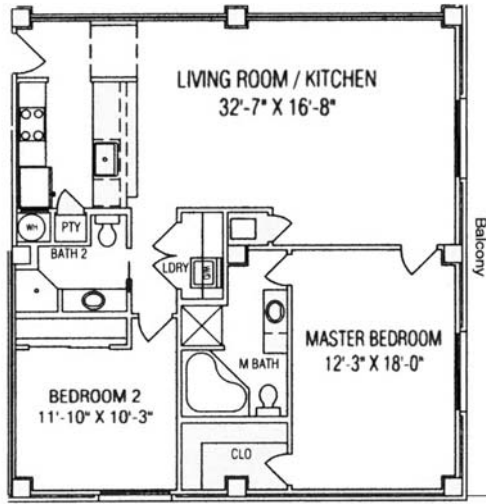


**UNIT D** 650 sq. ft.



**UNIT G** 770 sq. ft.

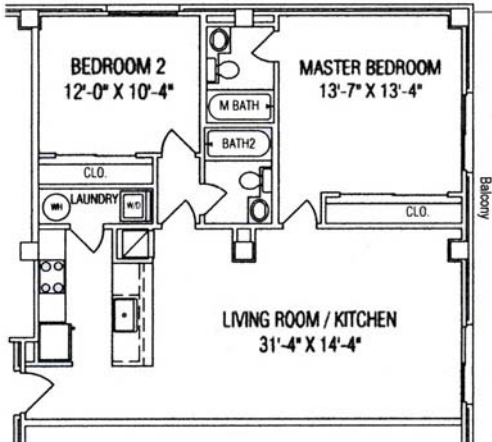
**Second-Fifth floor**



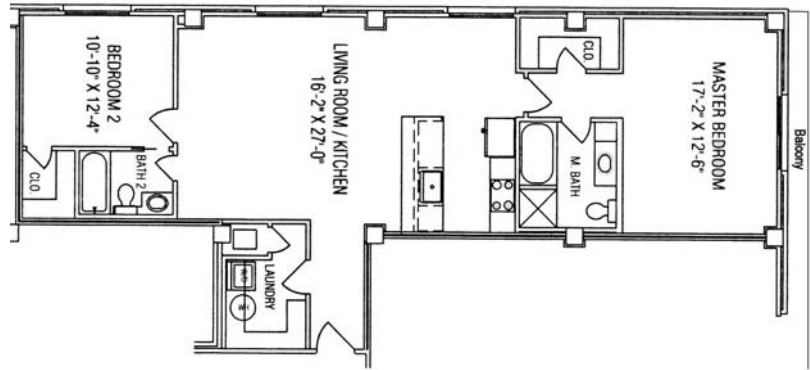
**UNIT A** 1,362 sq. ft.



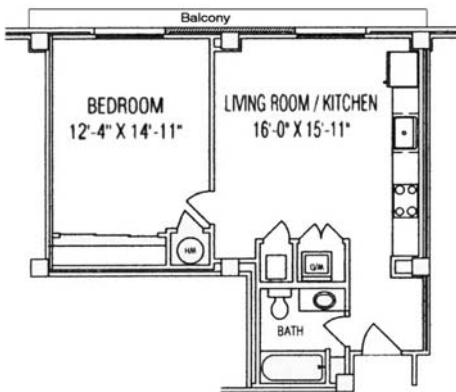
**UNIT E** 1,336 sq. ft.



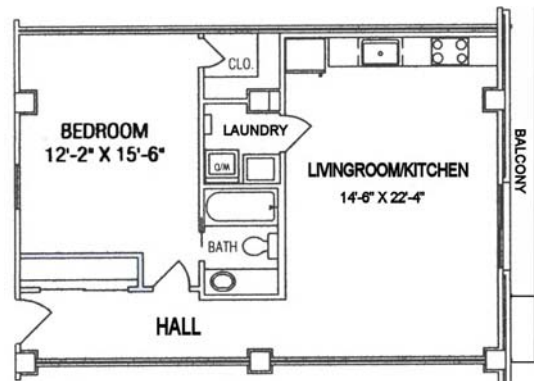
**UNIT C** 1,033 sq. ft.



**UNIT F** 1,195 sq. ft.



**UNIT D** 770 sq. ft.



**UNIT G** 870 sq. ft.